


# Windows XP



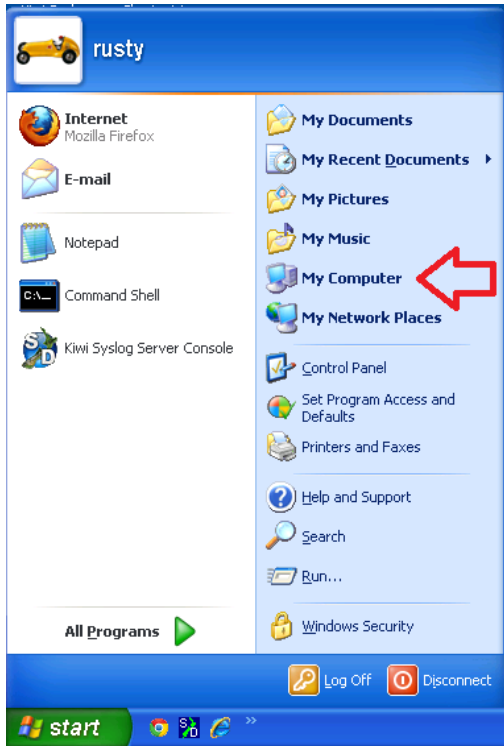
## Table of Contents

To verify you are on Windows XP	page 2
To change to DHCP	page 4

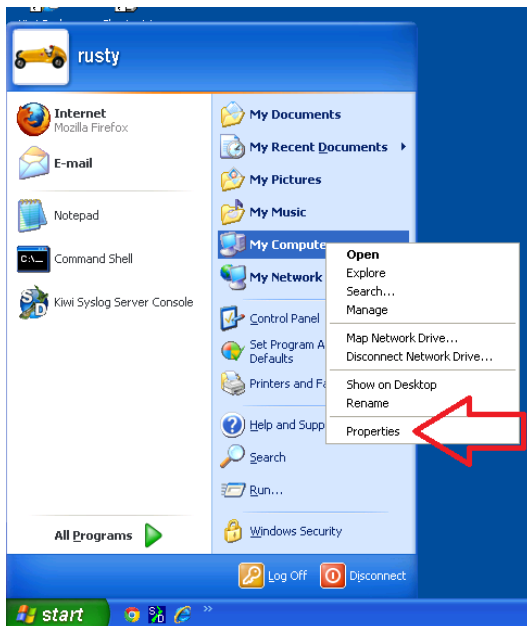
# To verify you are on Windows XP

Click on  found on the bottom left of the screen

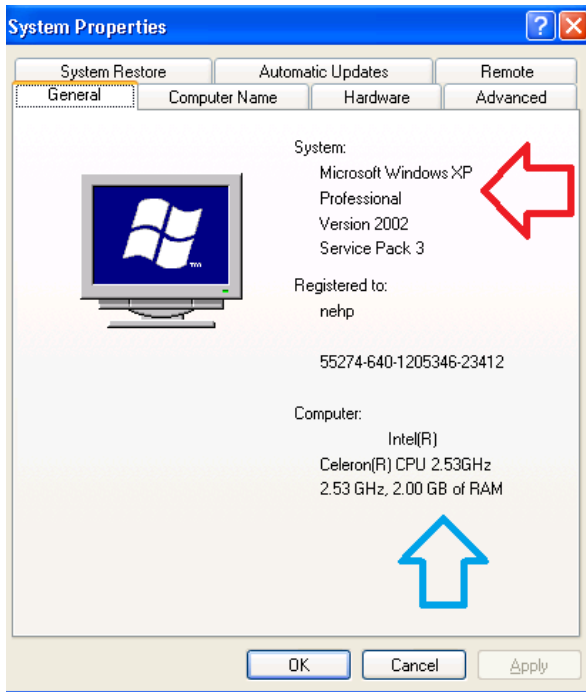
Right Click on 'My Computer'




Left Click on 'Properties'



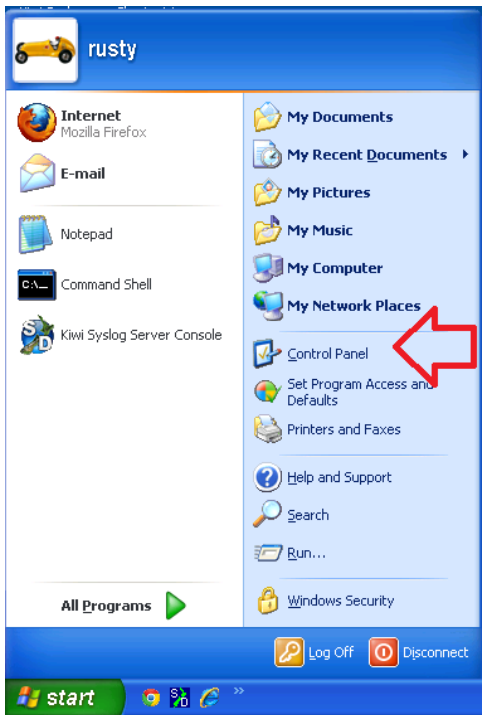
Find Operating System (**Red Arrow**) and other useful info, like RAM (**Blue Arrow**) All Windows XP are 32 bit



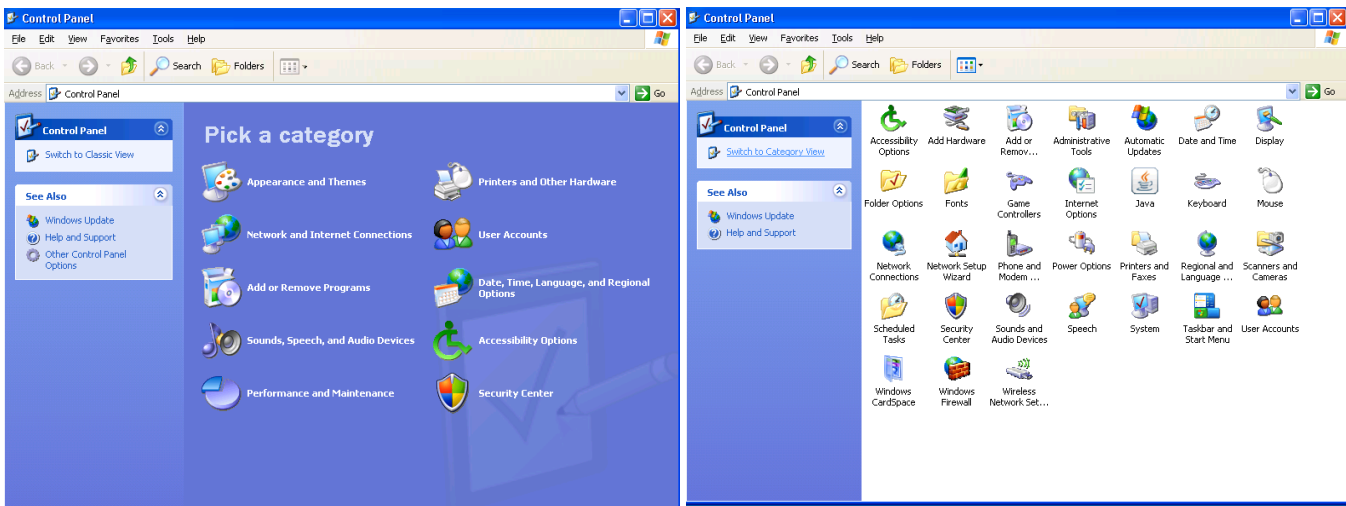
# To change to DHCP

Click on  found on the bottom left of the screen

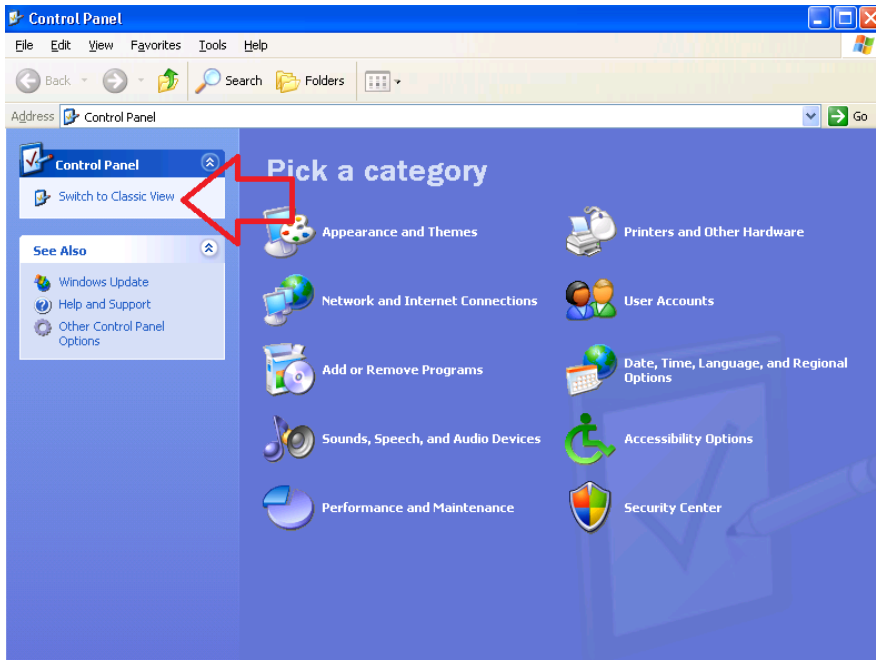
Click on 'Control Panel'



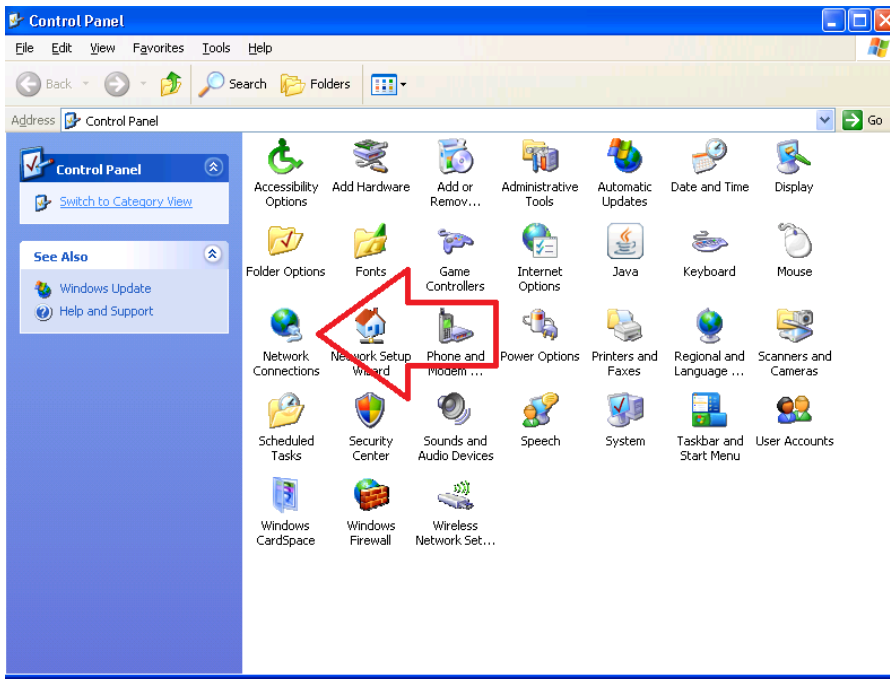
In Windows XP there are two versions of 'Control Panel': Classic View and Category View



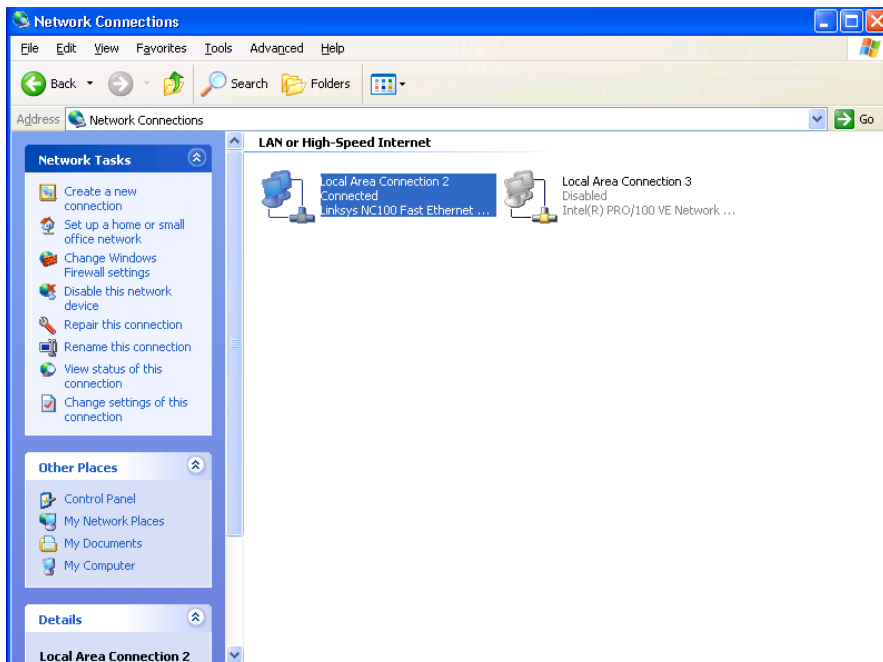
If you see 'Pick a category' click on 'Switch to Classic View'



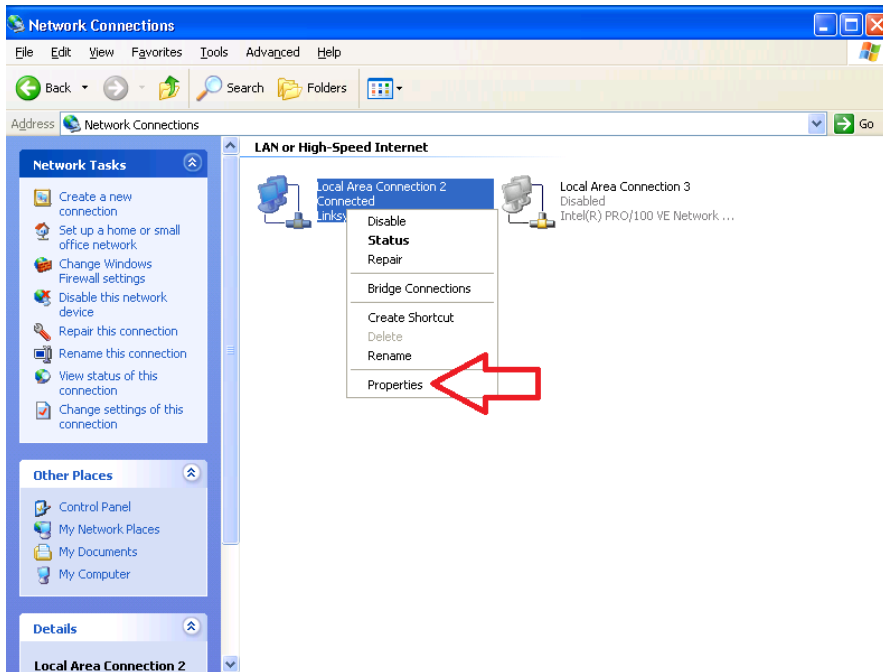
Double click on 'Network Connections' most times the icons are in alphabetical order



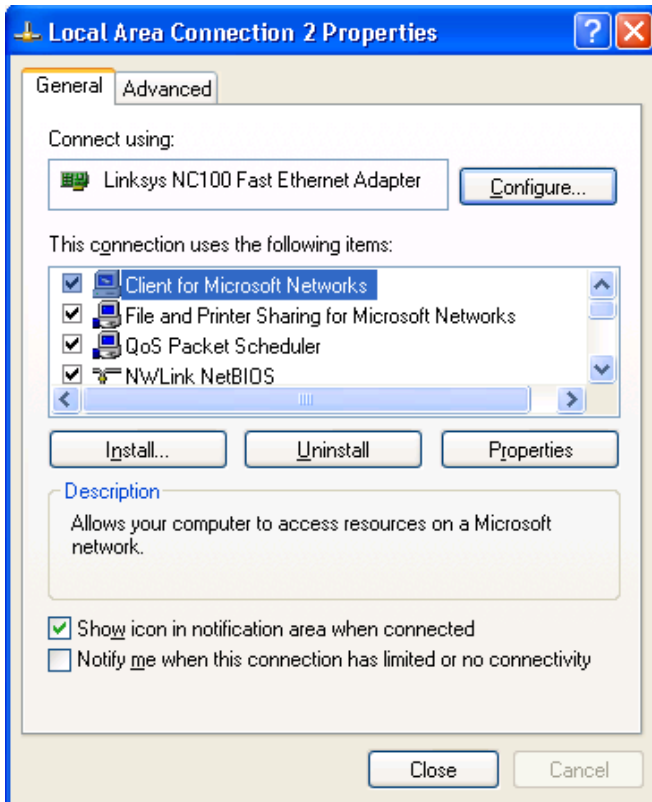
Select the 'Local Area Connection' by clicking one time with the left mouse button



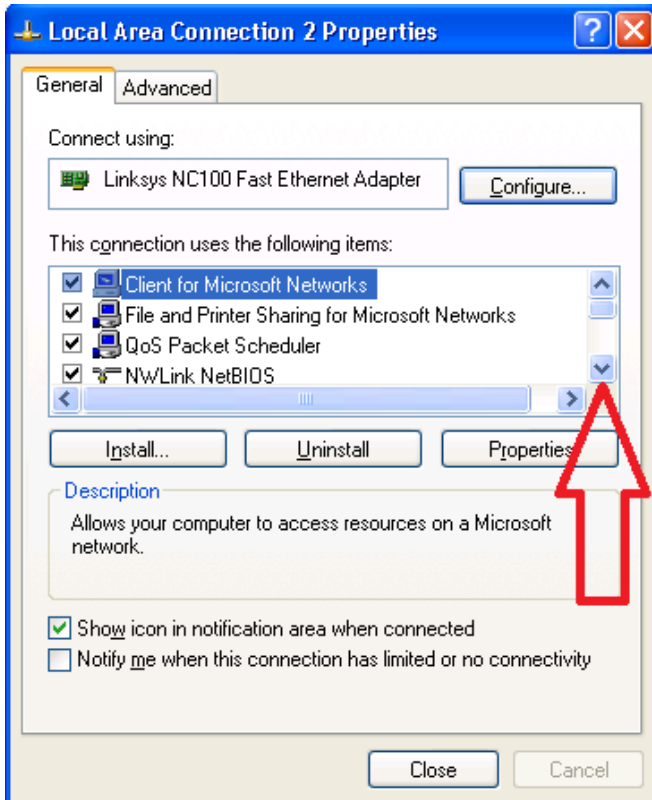
Without moving the mouse right click then move the mouse to the 'Properties' option and left click



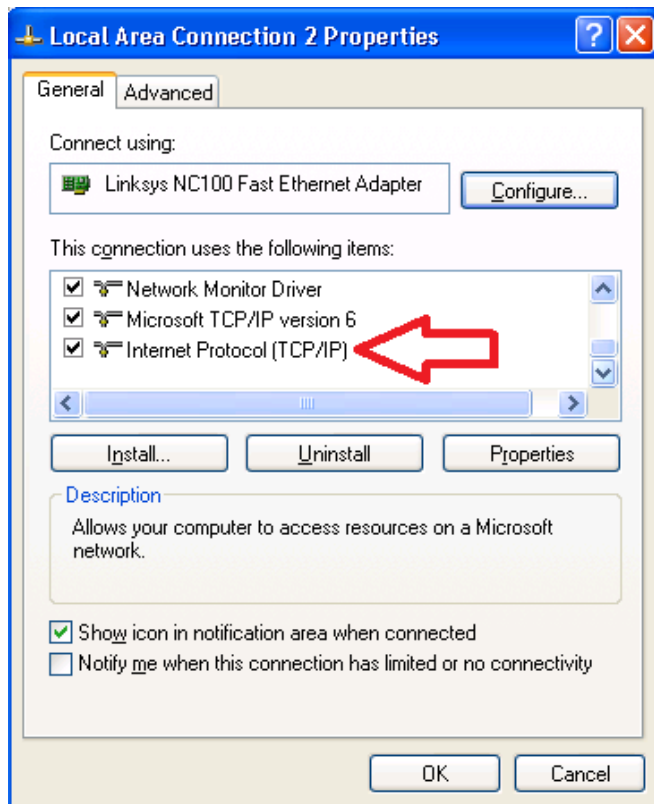
The Local Area Connection Properties windows will open



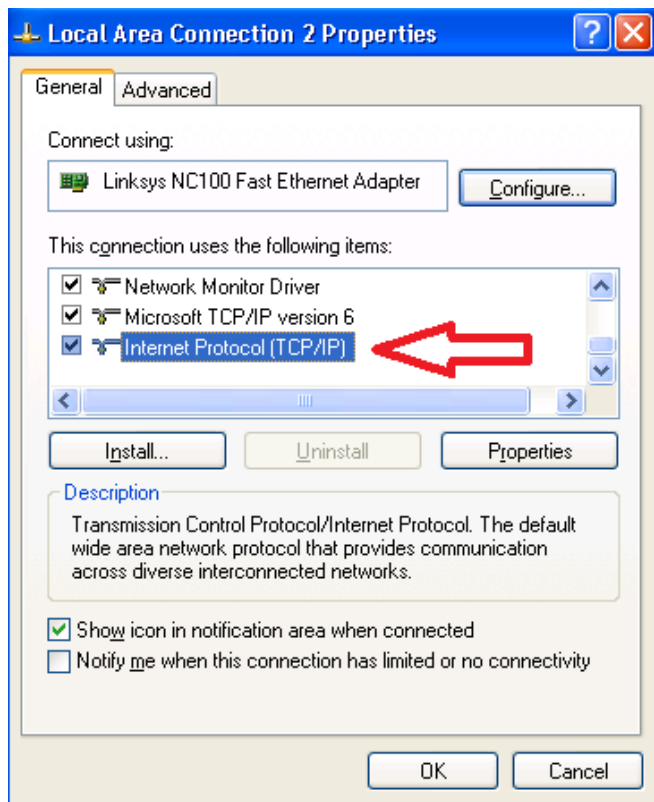
Scroll down



Until you find 'Internet Protocol (TCP/IP)

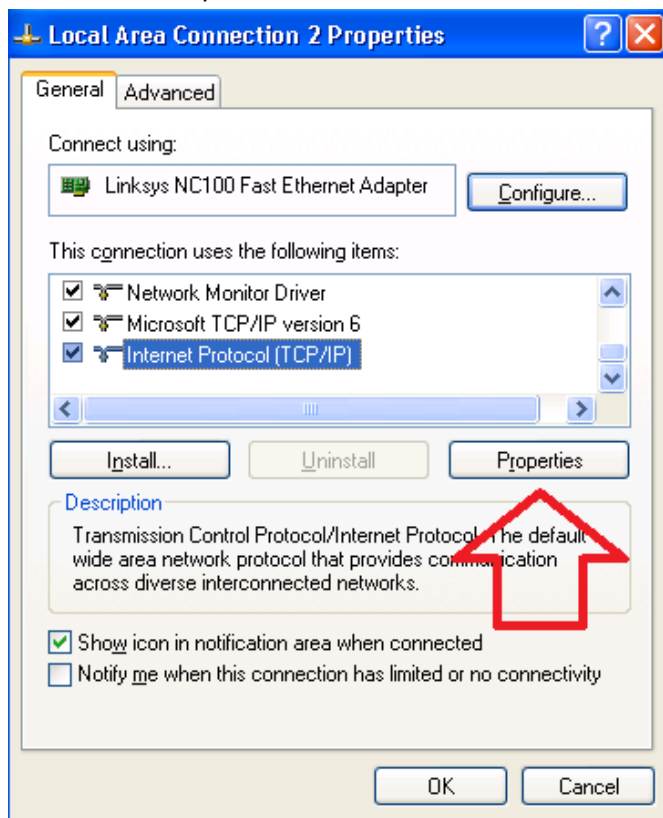


Click on the word 'Internet Protocol' which will turn the words blue, do not uncheck the box to the right

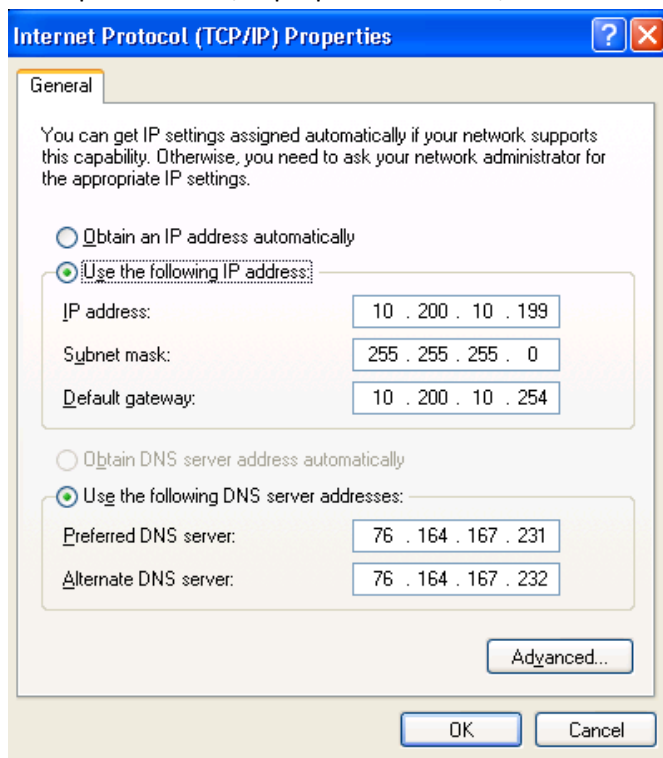




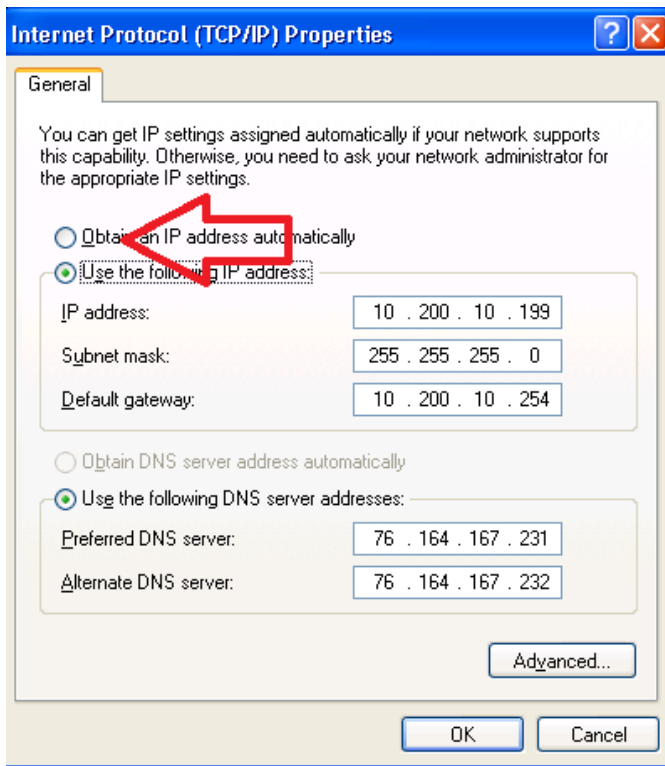
Click on the 'Properties' button



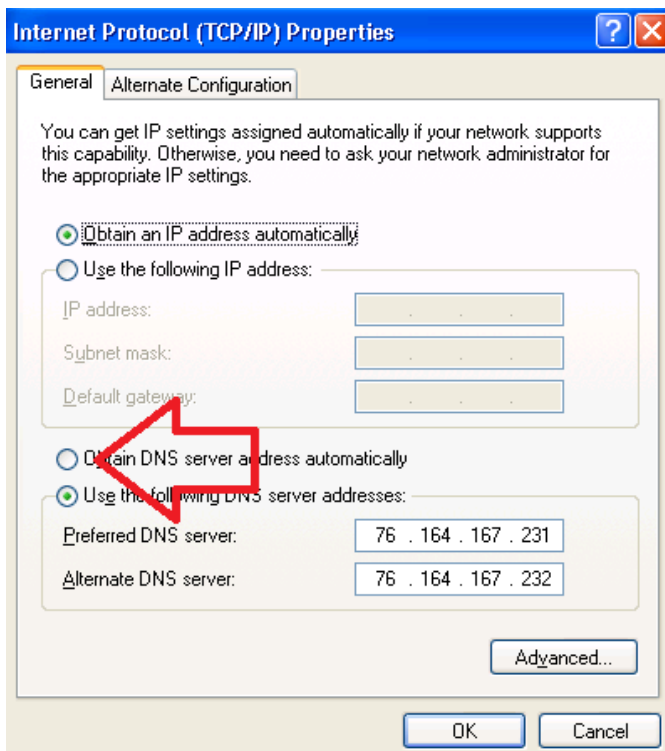
This opens the TCP/IP properties window, this shows static information



To change to DHCP first click in the 'radio button' next to 'Obtain an IP address automatically'



Then click in the 'radio button' next to 'Obtain DNS server address automatically'



Click 'OK' or 'Close' in all open windows. You're done.