


Windows 98



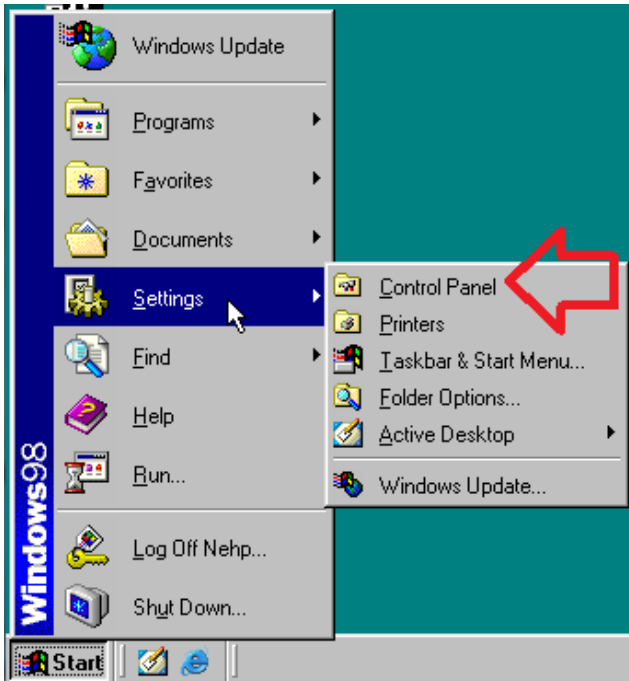
Table of contents

To verify you are on Windows 98	page 2
To change to DHCP	page 4

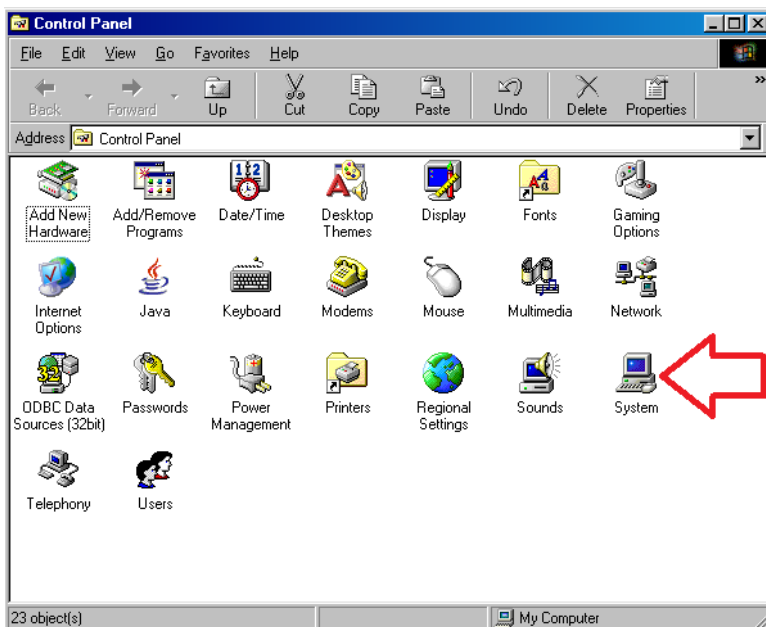
To verify you are on Windows 98

Click on  found on the bottom left of the screen

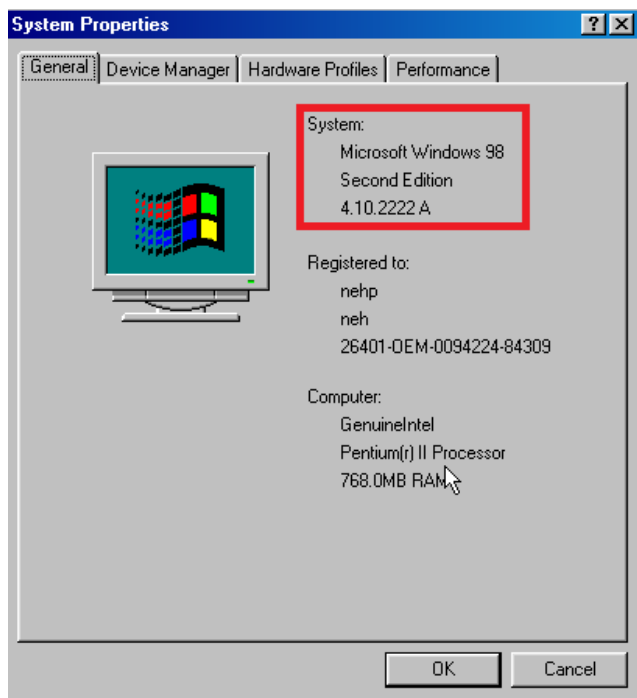
Mouse over 'Settings' then click on 'Control Panel'



Double click on 'System'




Windows 98 2nd Edition

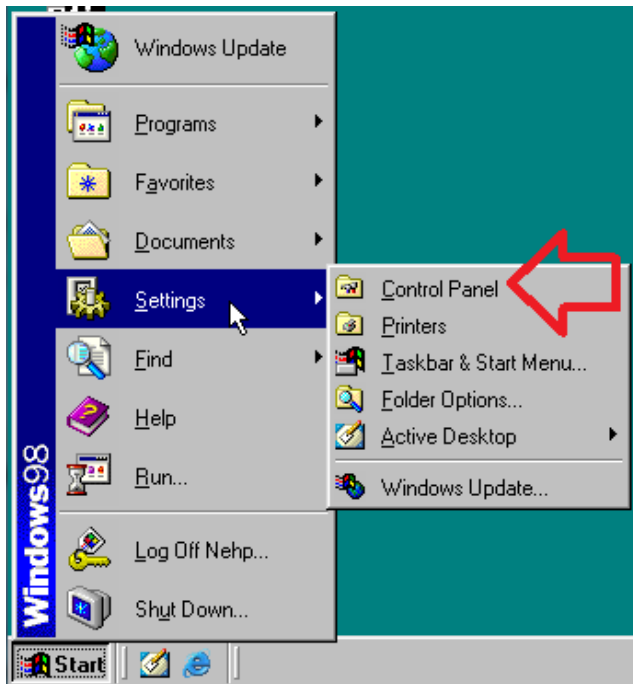


Click 'OK' to close window

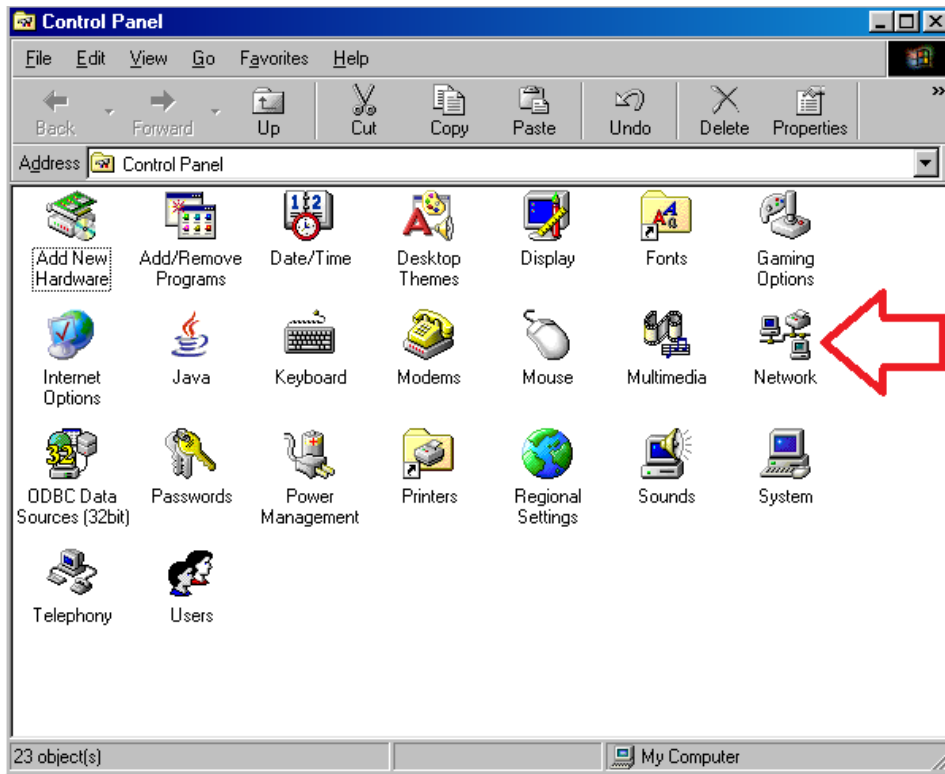
To change to DHCP

Click on  found on the bottom left of the screen

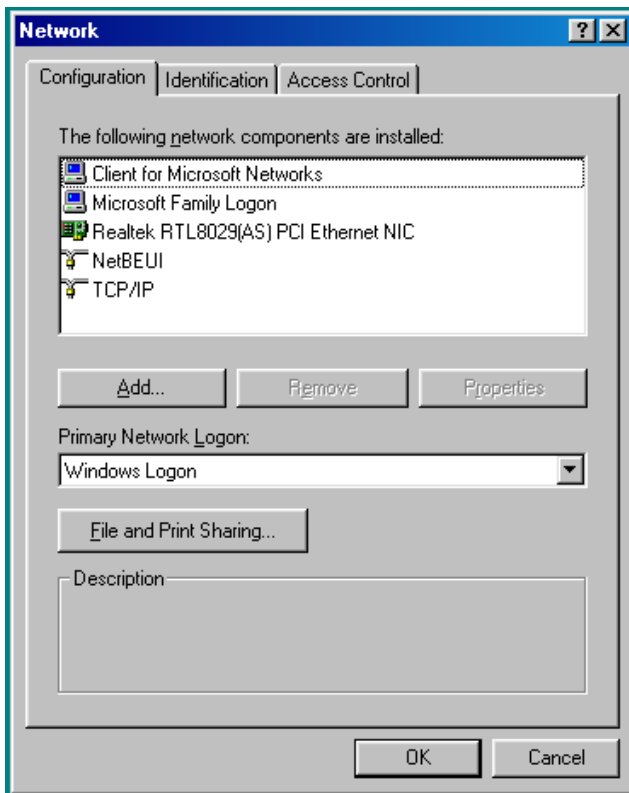
Mouse over 'Settings' then click on 'Control Panel'



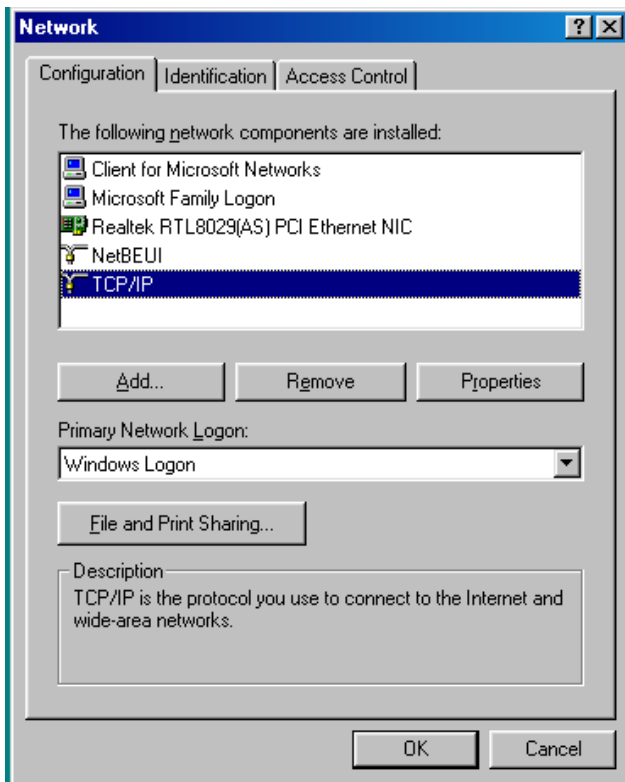
Double click on 'Network'



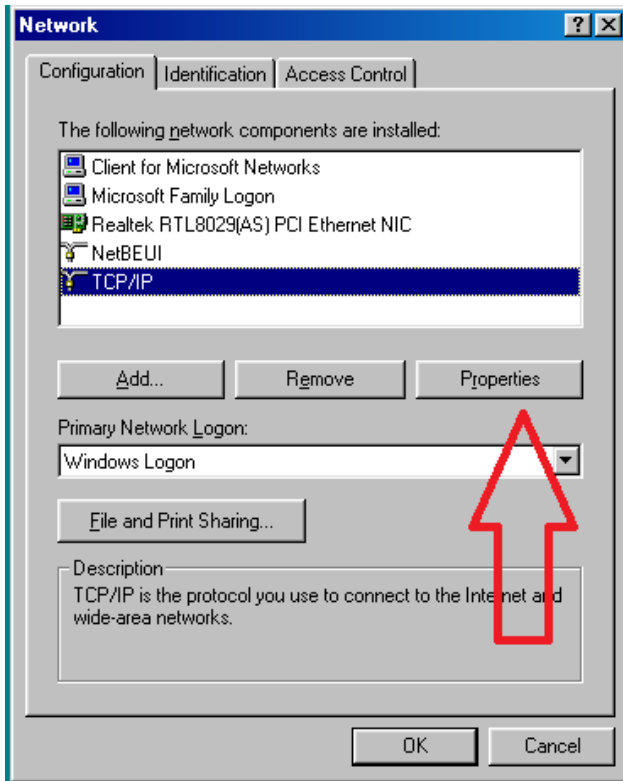
This will open the Network window



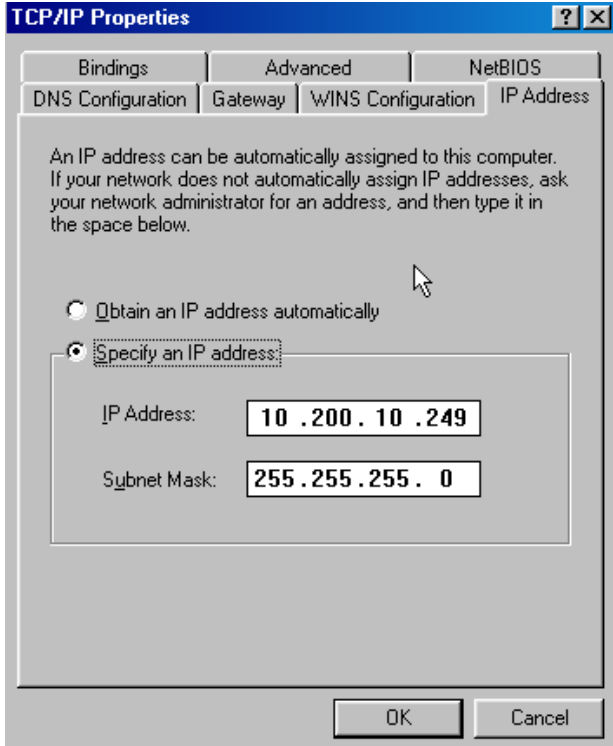
Click on TCP/IP turn them blue



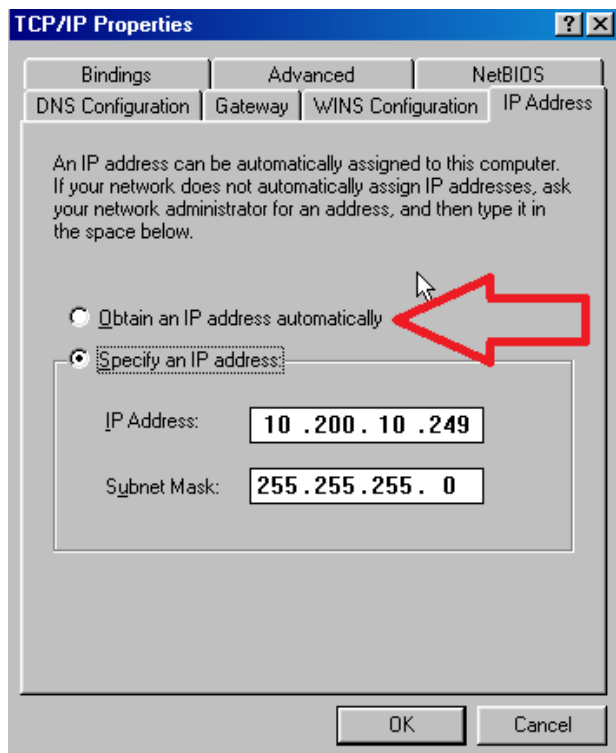
Click on the 'Properties' button



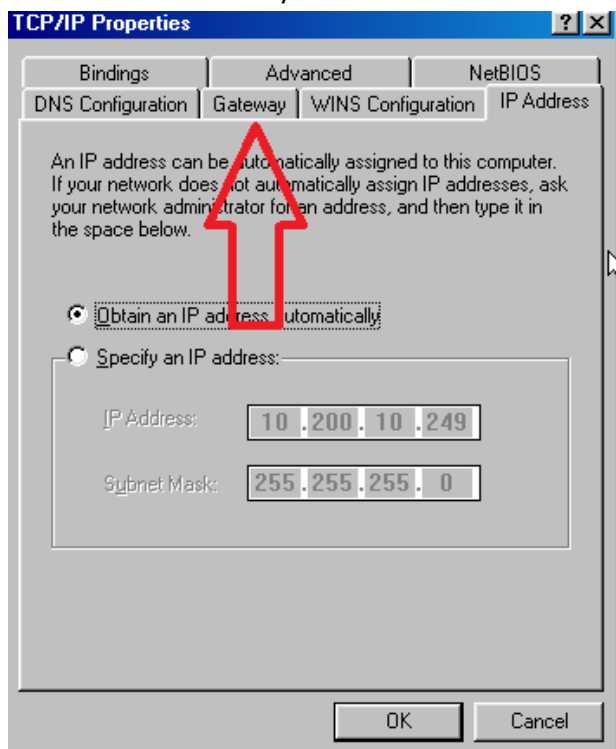
This will open the TCP/IP Properties window



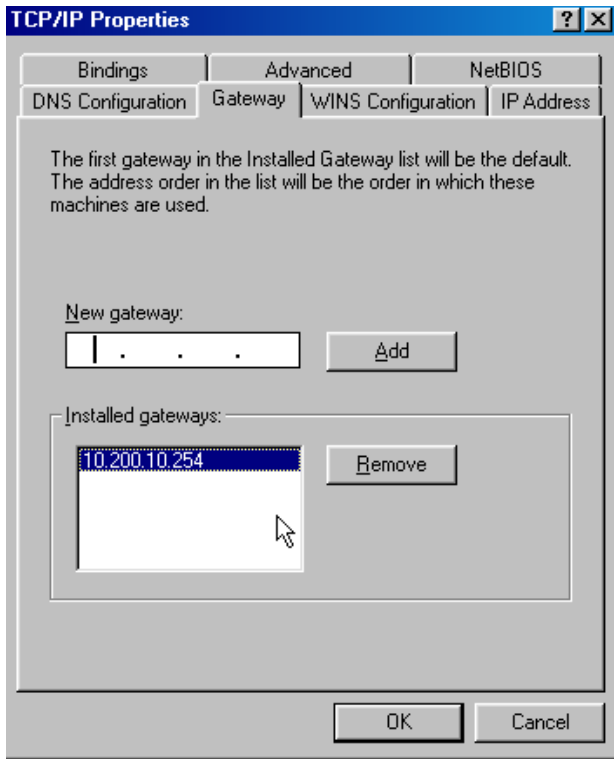
Click in the radio button 'Obtain an IP address automatically'



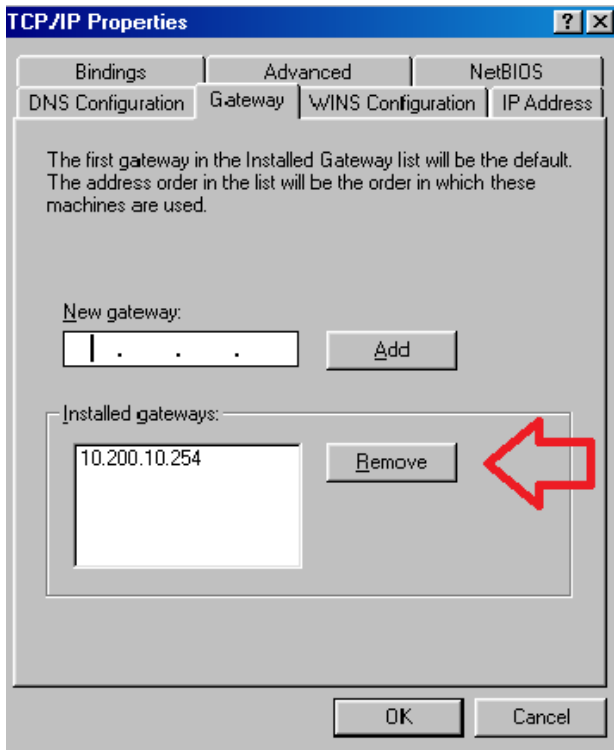
Then click the 'Gateway' tab



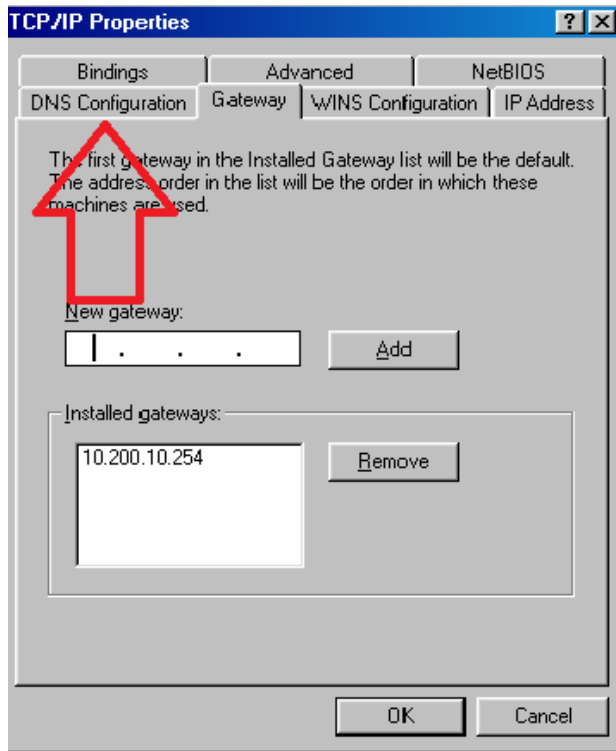
If there are any numbers in the 'Installed gateways' field select them by clicking on the numbers



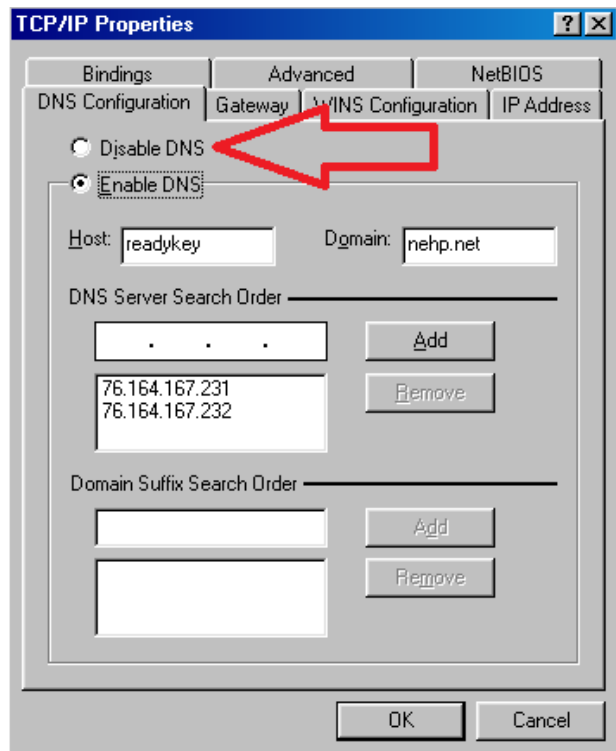
Then click the 'Remove' button



Click on the 'DNS Configuration' tab



Click the radio button 'Disable DNS'



Click 'OK' or 'Close' in all open windows. Close any remaining windows that may be left open.

You will be forced to reboot the computer, if it does not tell you to reboot, then you must do it manually.