

Windows 8



Table of contents

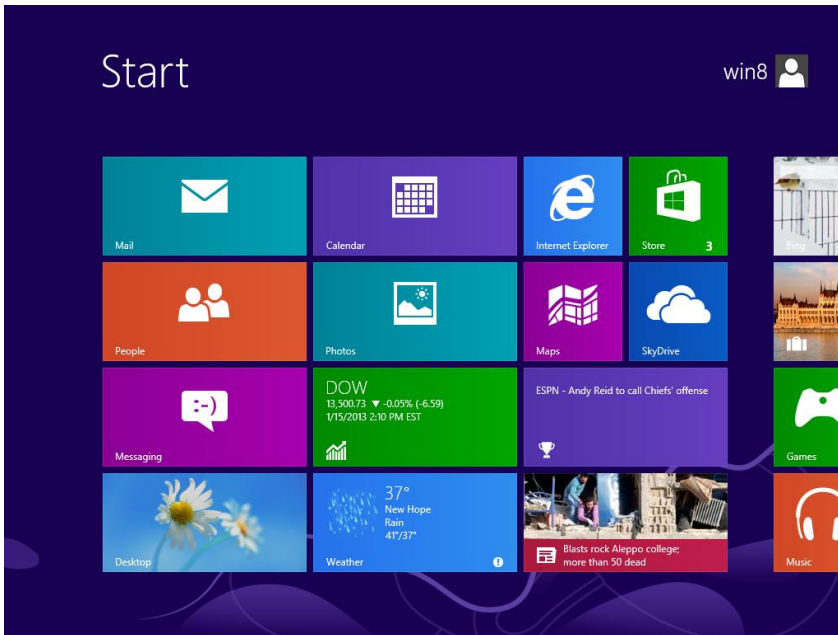
To change Network Setting on Windows 8

page 2

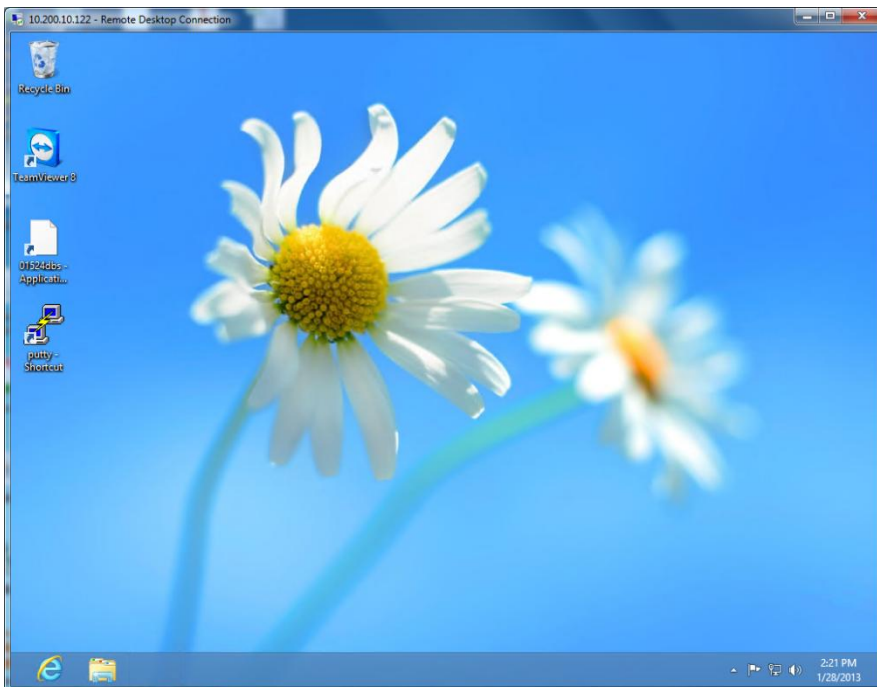
To change Network Setting on Windows 8

Note most Windows 8 will be set to DHCP

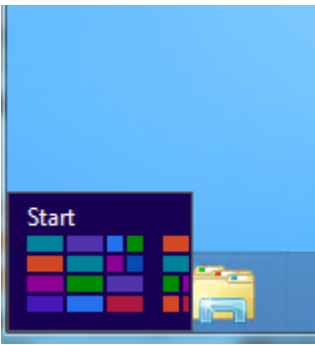
Windows 8 may look something like this



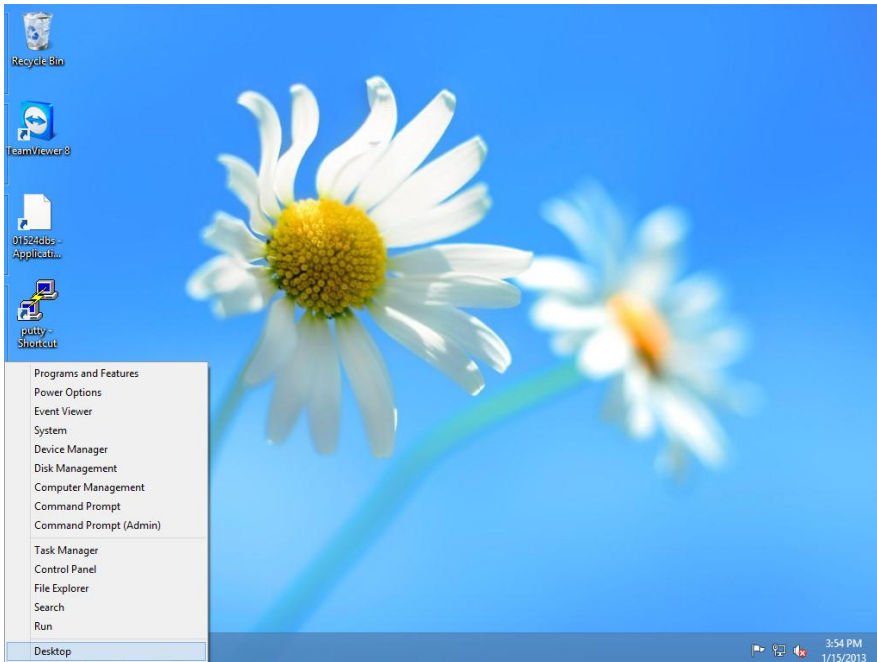
The windows key + the d key on the keyboard will bring up the old win7 type interface there is no start button in Windows 8.



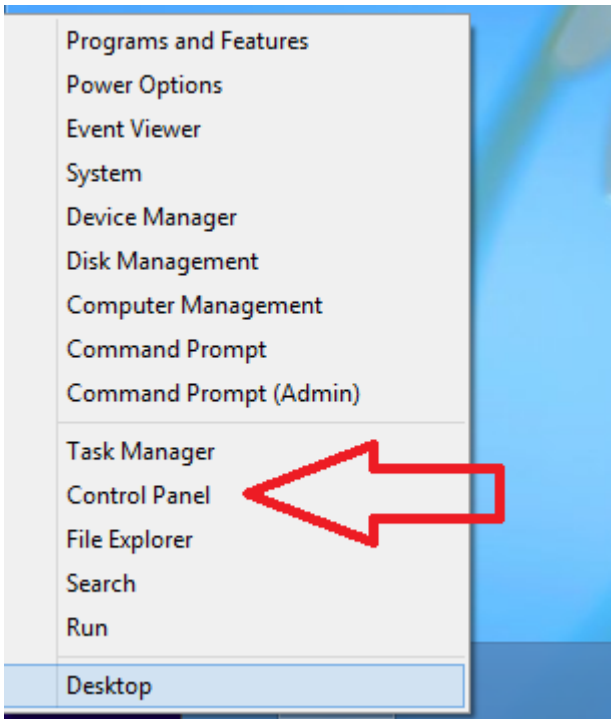
Move the mouse to the bottom left corner where the old start button use to be and this should pop up



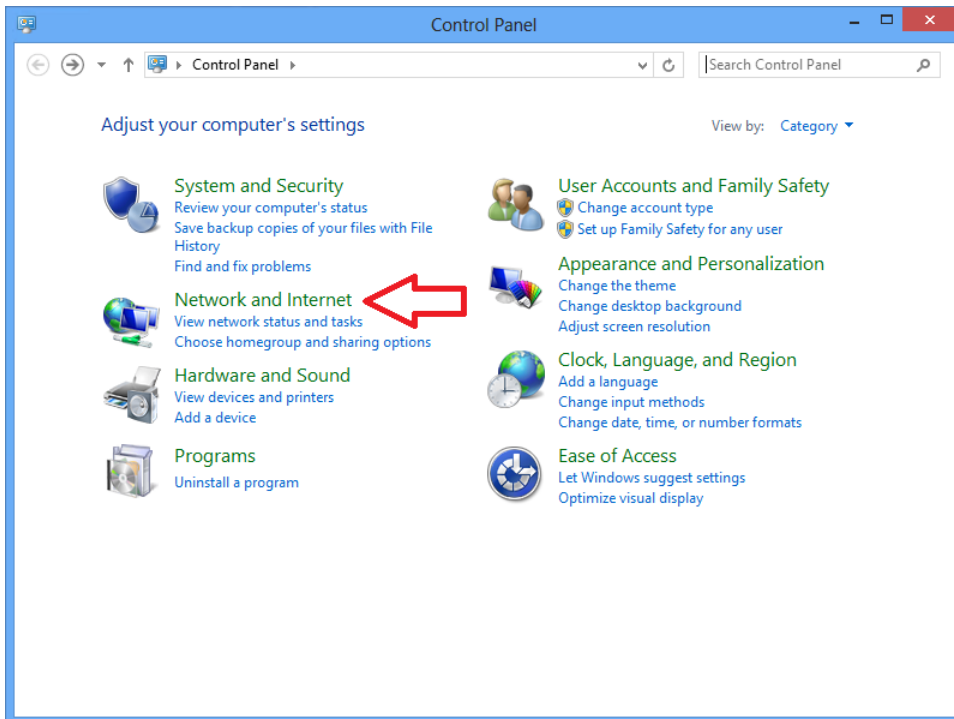
Then right click and this menu should pop up.



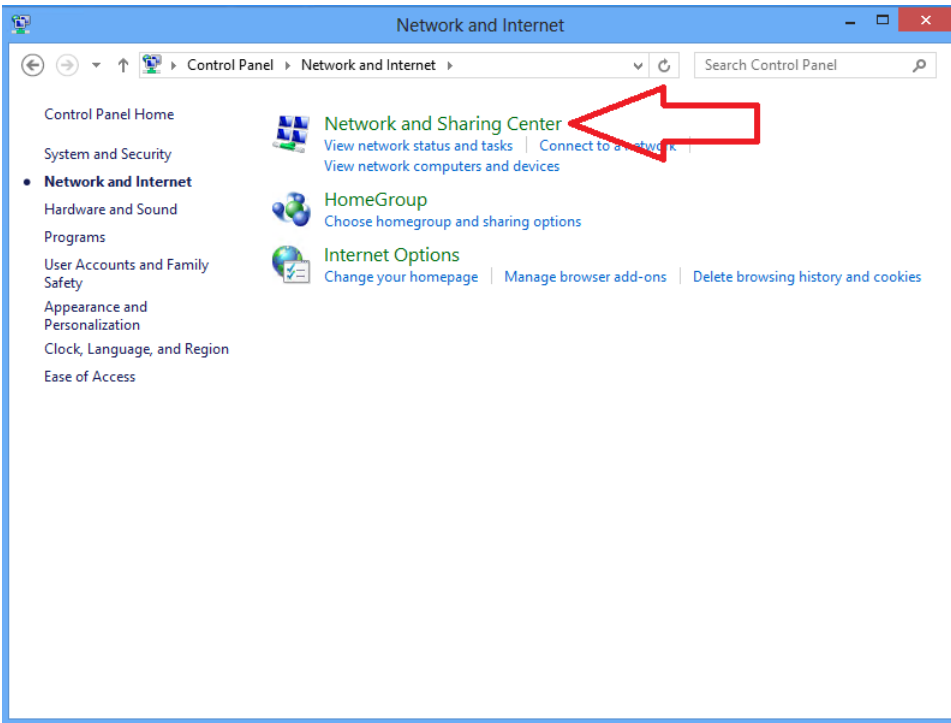
Click on Control Panel



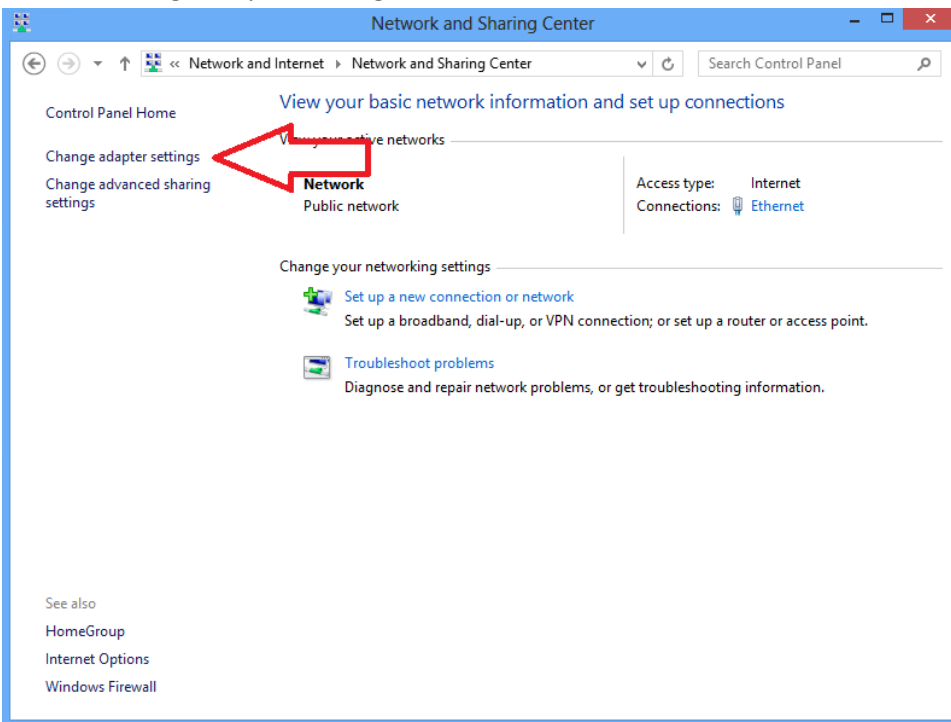
Click on 'Network and Internet'



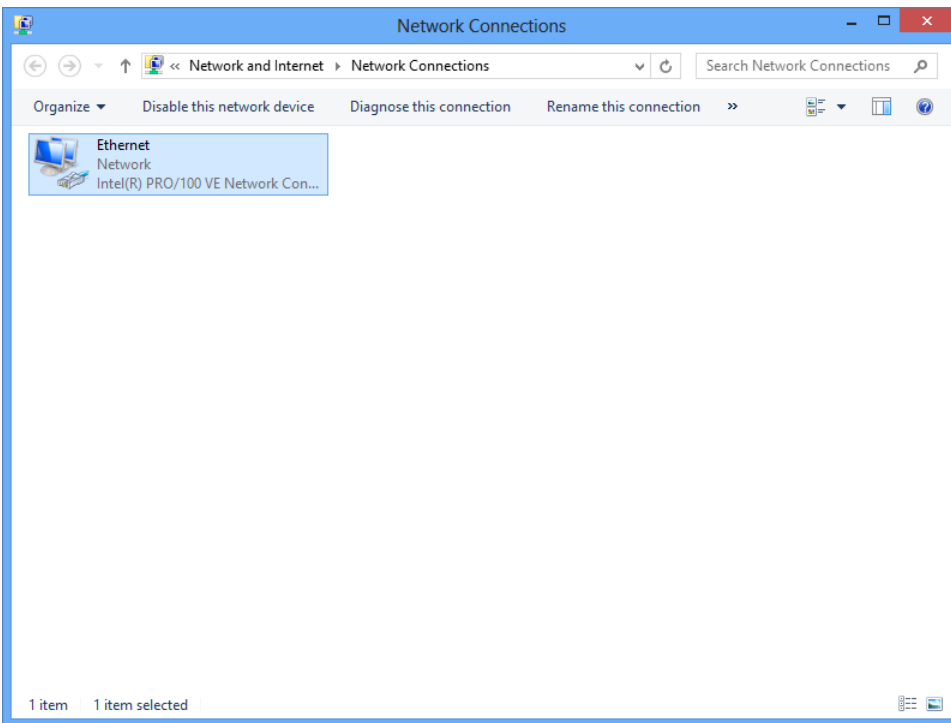
Click on 'Network and Sharing Center'



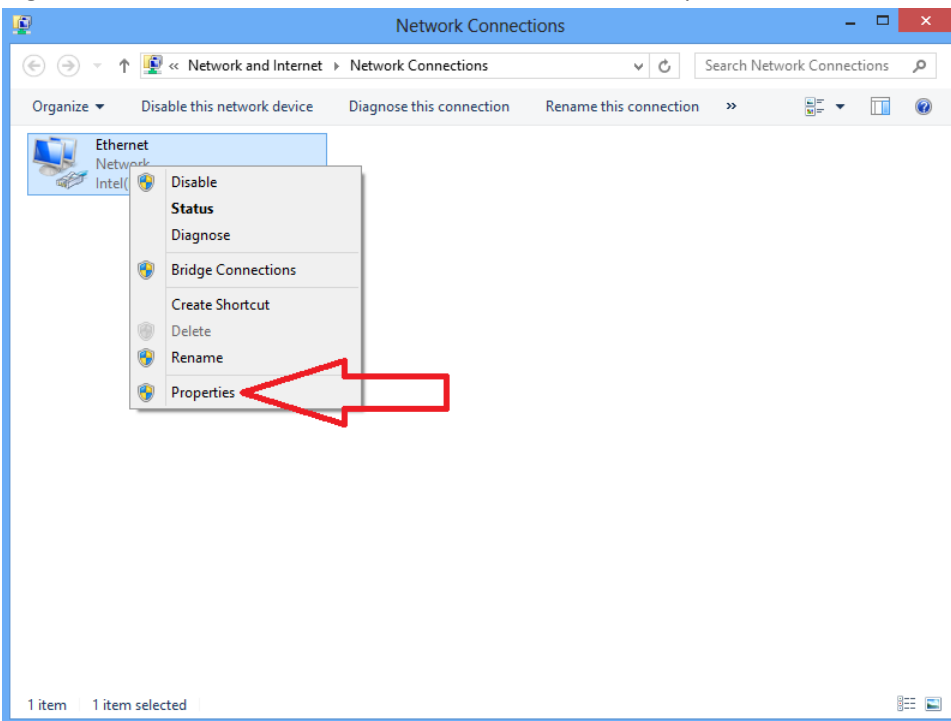
Click on 'Change adapter settings'



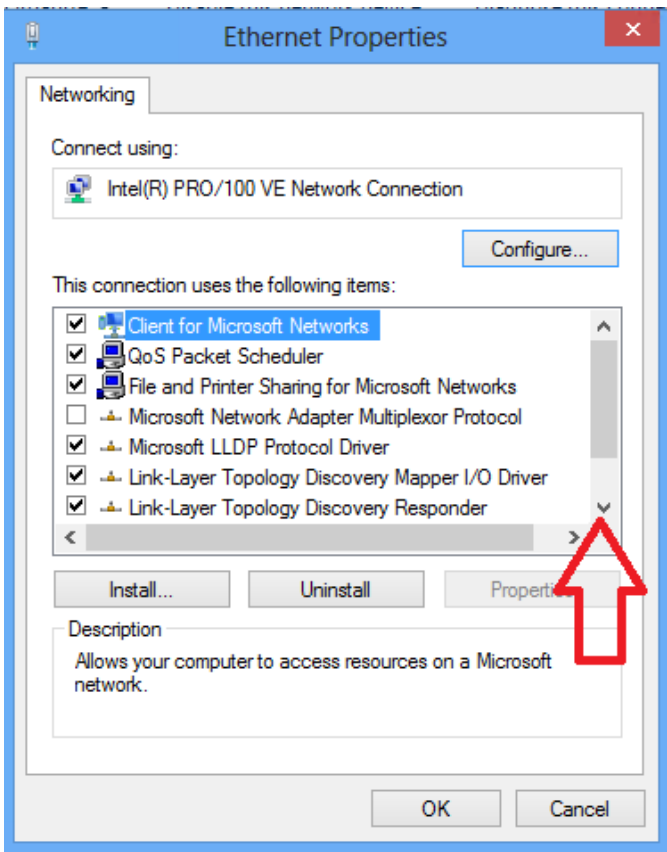
Select the 'Ethernet' icon (select means click one time with the left mouse button – do not double click)



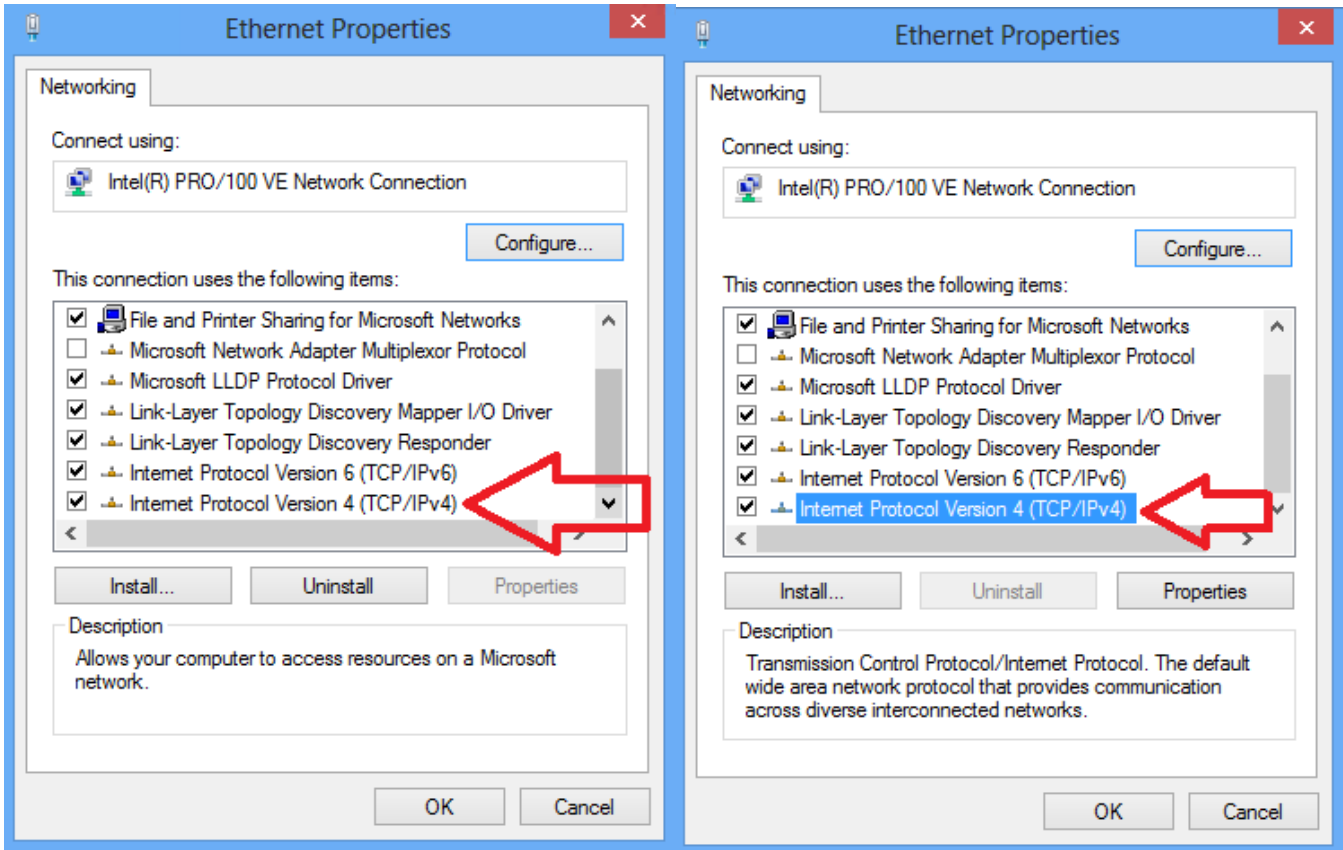
Right click on the 'Ethernet' icon and left click on the 'Properties'



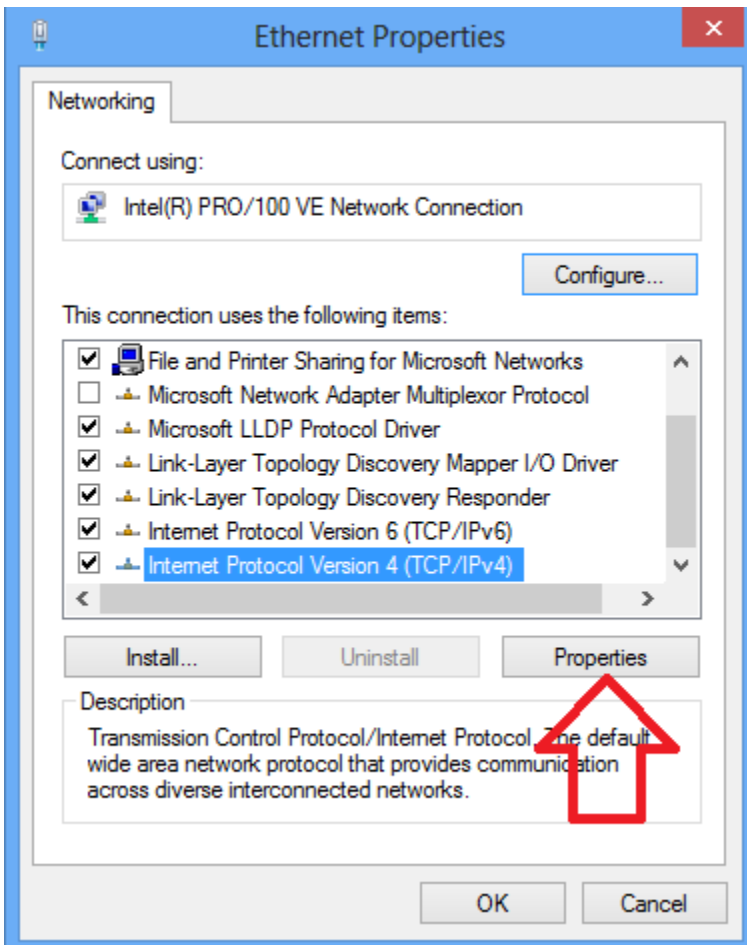
This will open the Ethernet Properties Window, scroll down using the scroll bar on the right (red arrow)



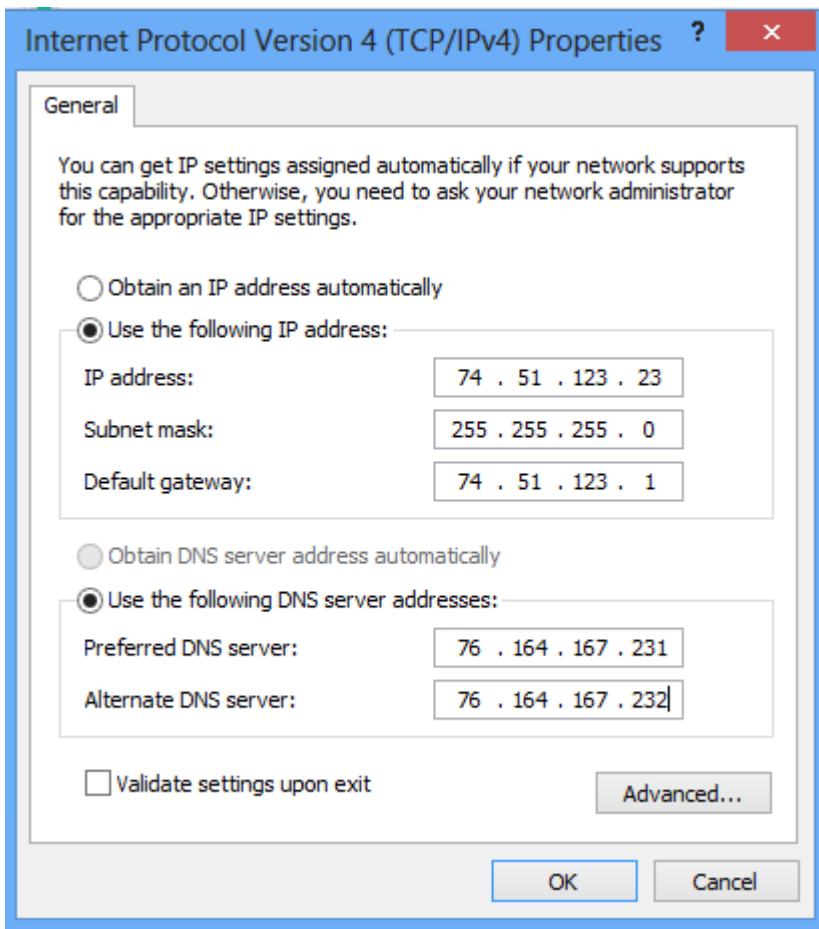
Select 'Internet Protocol Version 4 (TCP/IPv4)' by clicking on the words, they will turn blue in most cases DO NOT UNCHECK the box to the left



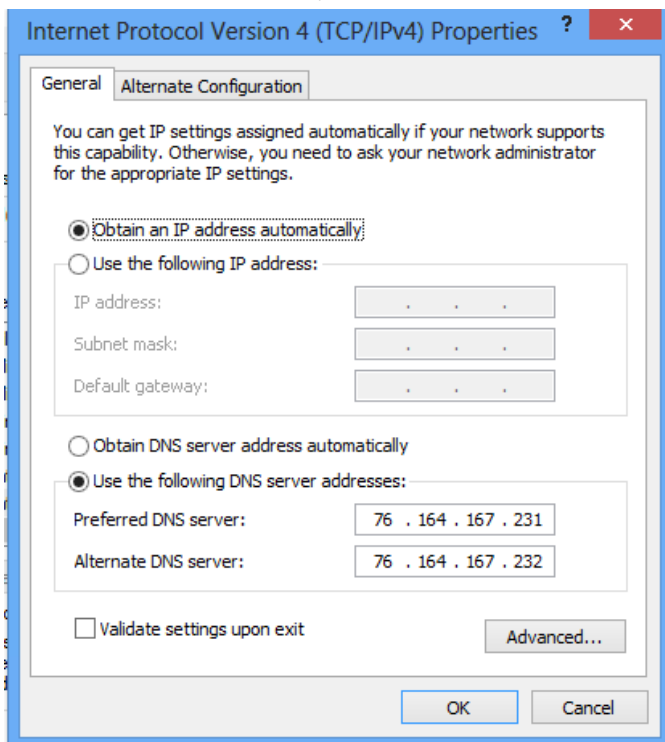
Click on the 'Properties' button. If you are unable to click on it then the select did not work.



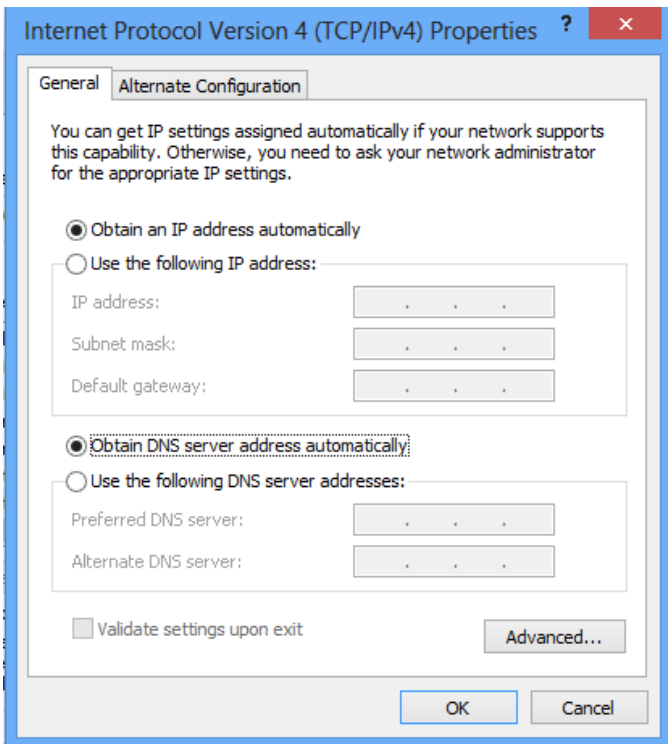
If there are numbers in the fields like this, skip to next step



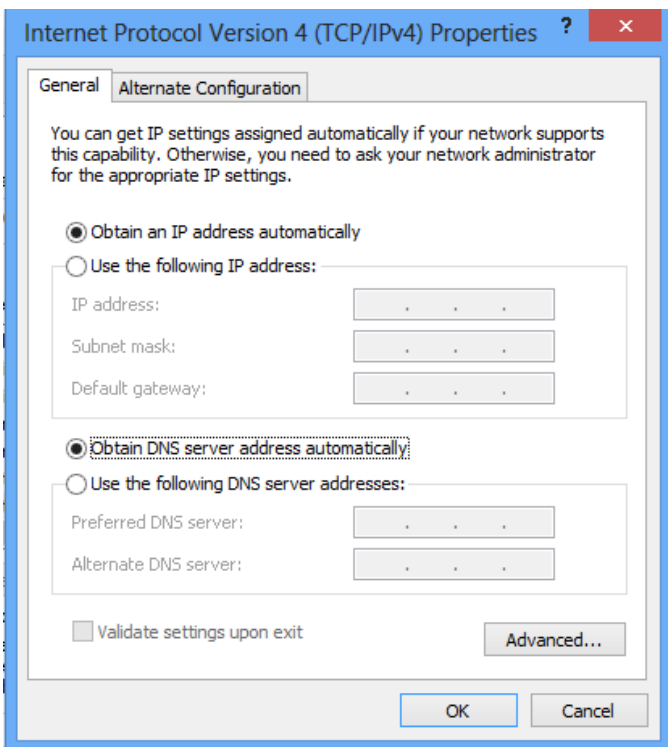
Click in the 'Radio Button', 'Obtain an IP address automatically'



then 'Obtain DNS server address automatically'



It will look like this



Click 'OK' and on close until all windows are closed.